



**03539780**  
Edition 10  
October 2013

# Air Screwdriver

41-EU Series

---

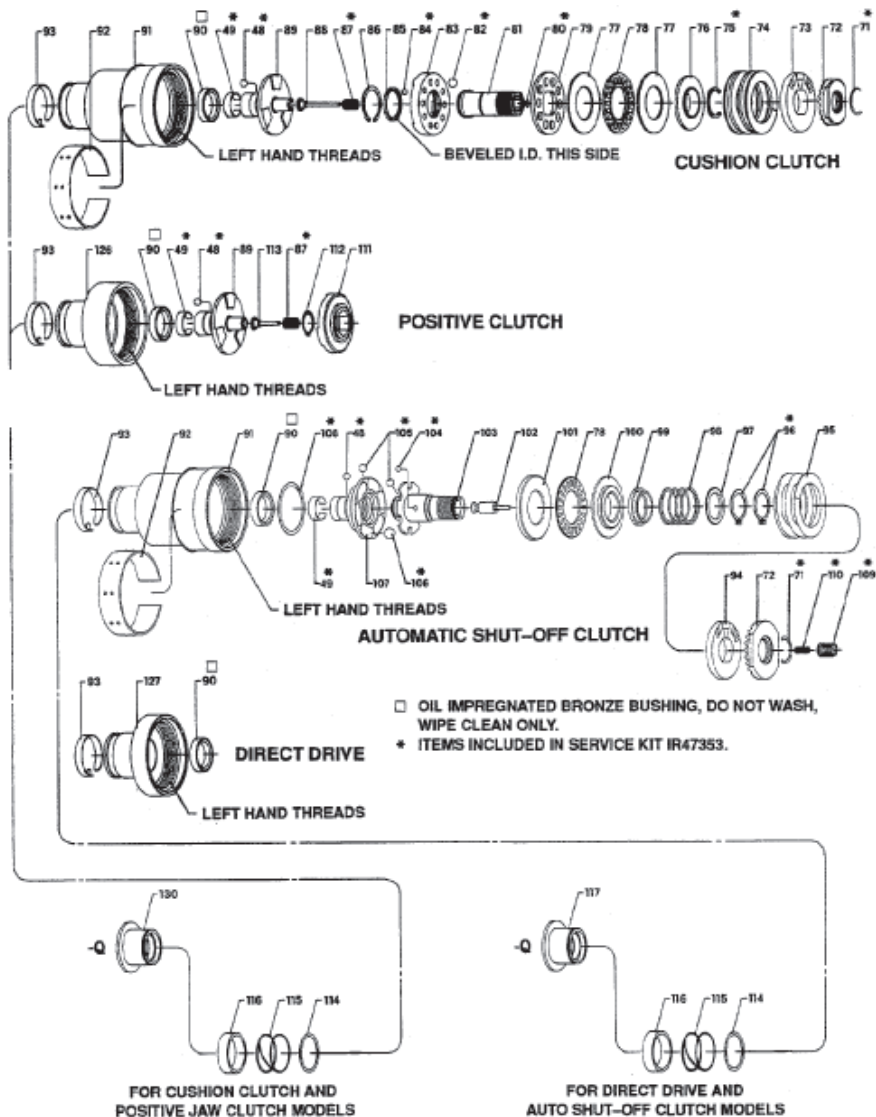
## Parts Information



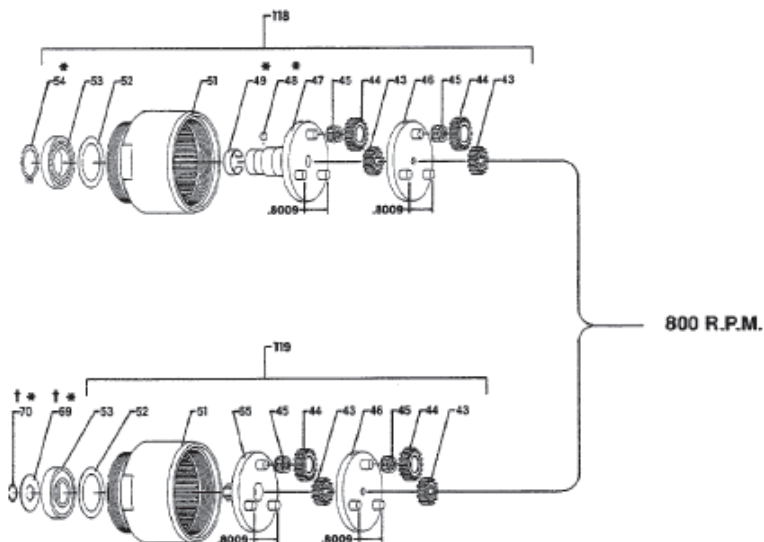
Save These Instructions

 **Ingersoll Rand**<sup>®</sup>

## 41-EU Series Air Screwdriver - Exploded View



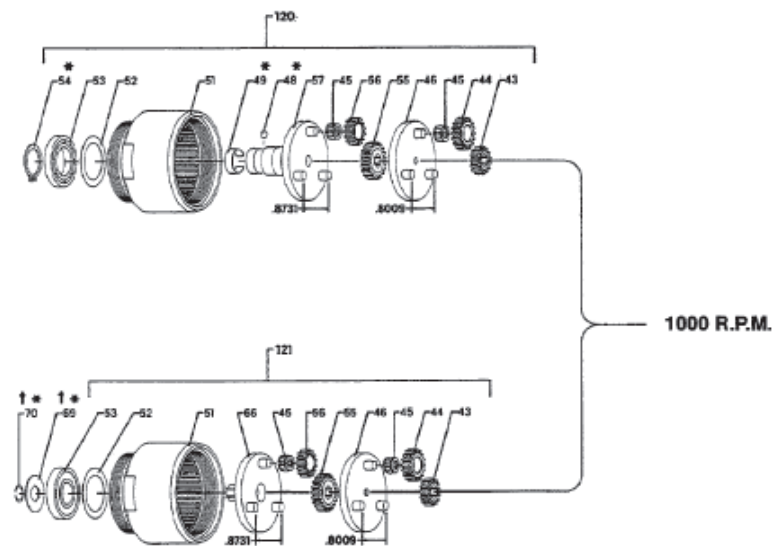
41-EU Series Air Screwdriver - Exploded View (Continued)



800 R.P.M.

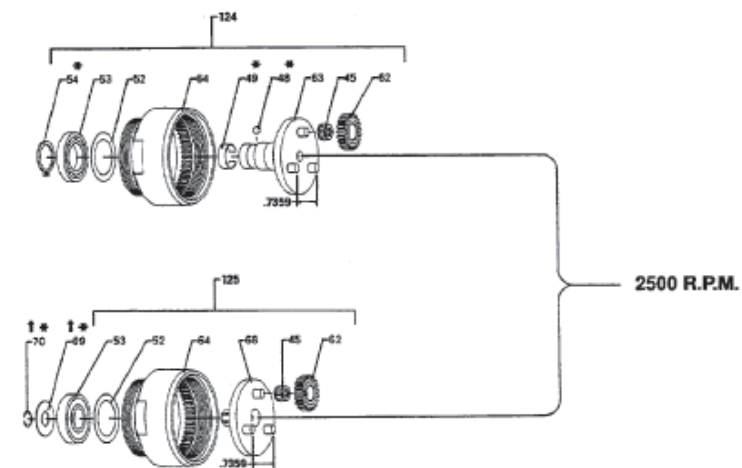
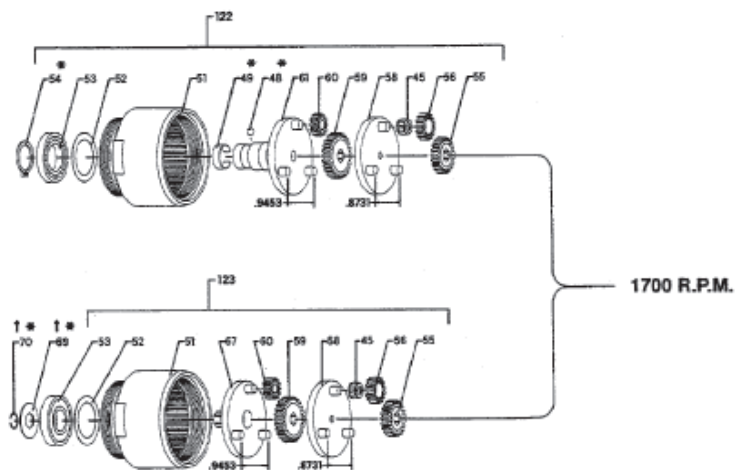
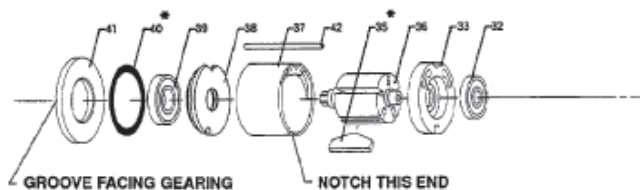
\* ITEMS INCLUDED IN SERVICE KIT IR47353.

† USED ONLY WITH AUTO SHUT-OFF AND CUSHION CLUTCH MODELS.

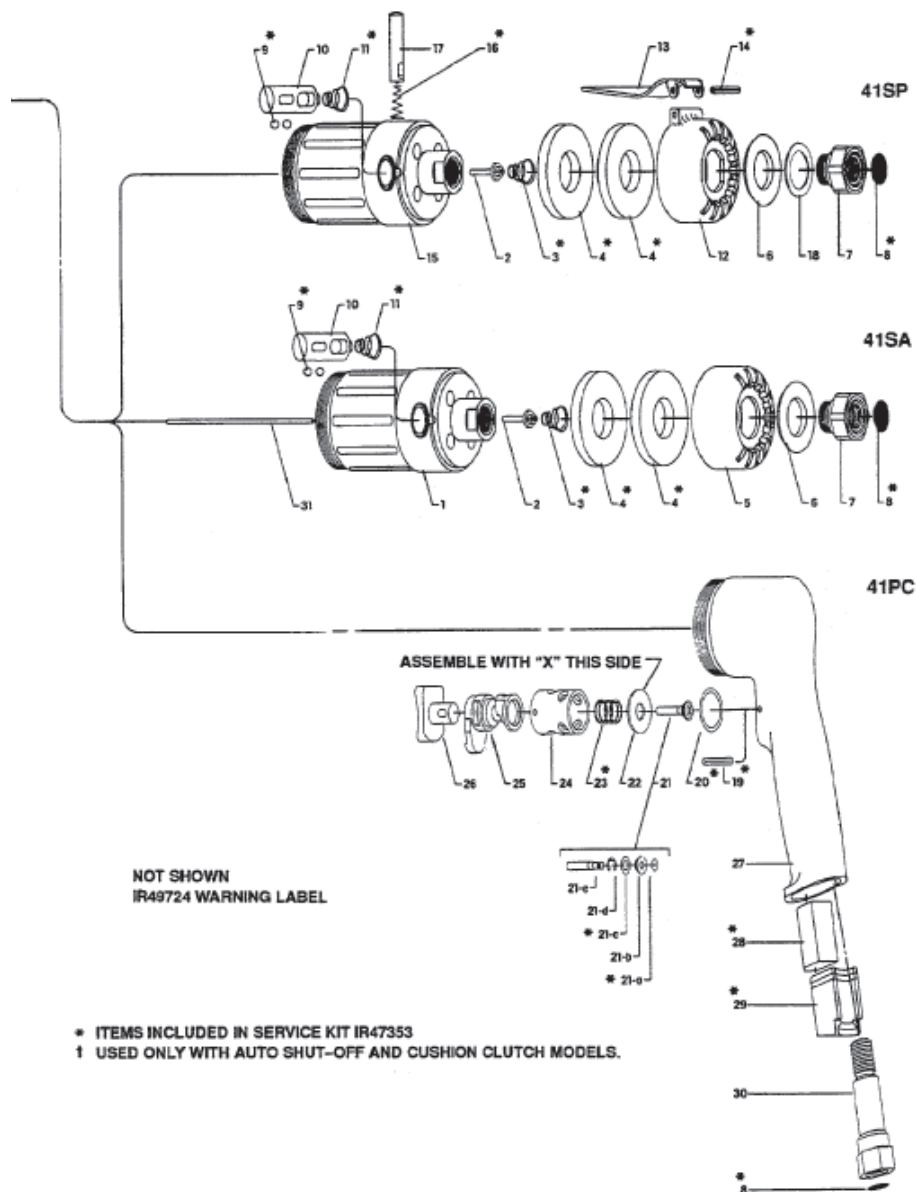


1000 R.P.M.

## 41-EU Series Air Screwdriver - Exploded View (Continued)



41-EU Series Air Screwdriver - Exploded View (Continued)



## 41-EU Series Air Screwdriver - Parts List

Item	Part Description	Part Number	Item	Part Description	Part Number
1	Head and Bushing Assembly (for push-start models)	49718	40	O-ring	Y325-214
2	Valve Rod Assembly	46354	41	Spacer	46412
3	Spring	41654	42	Locating Pin	
4	Filler (2)	46452		for Pistol Grip models	47723-1
5	Exhaust Cap (for push-start models)	46447		for Lever and Push Start models	47723-2
6	Diffuser Washer	46449	43	Sun Gear (1 or 2) (4.4:1 ratio) (15 teeth)	46466
7	Inlet Adapter	46377	44	Planet Gear (3 or 6) (4.4:1 ratio) (18 teeth) (requires item 45)	46900
8	Screen	33911	45	Needle Bearing (3 or 6)	42315
9	Ball (2)	Y16-204	46	Carrier Assembly (4.4:1 ratio)	46522
10	Valve Body	46476	47	Spindle Assembly (4.4:1 ratio) (direct drive)	47270
11	Spring	41654	48	Ball (included with items 47, 57, 61, 63 and 89)	Y16-204
12	Exhaust Cap (for lever throttle models)	46448	49	Retaining Clip (included with items 47, 57, 61, 63 and 89)	47695
13	Lever	46326	51	Ring Gear (double reduction)	
14	Roll Pin	Y178-28		for Straight models	48904
15	Head and Bushing Assembly (for lever throttle models)	49719		for Pistol Grip models	48904
16	Spring	46374	52	Spacer	46496
17	Throttle Pin	46296-2	53	Ball Bearing	
18	Spacer	47205		for Cushion and Auto Shut-Off Clutch models	Y65- 13
19	Spiral Pin	46849		for Direct Drive and Positive Clutch models	46243
20	O-ring	Y325-15	54	Retaining Ring	38339
21	Valve Stem Assembly	46848-2	55	Sun Gear (3.43:1 ratio) (21 teeth)	46465
21-a	O-ring	Y325-3	56	Planet Gear (3) (3.43:1 ratio) (15 teeth) (requires item 45)	46899
21-b	Valve	45473-1	57	Spindle Assembly (3.43:1 ratio) (direct drive)	47269
21-c	O-ring	Y325-7	58	Carrier Assembly (3.43:1 ratio)	46521
21-d	Retaining Ring	Y180-13	59	Sun Gear (2.89:1 ratio) (27 teeth)	46464
21-e	Valve Stem	46847-2	60	Planet Gear (3) (2.89:1 ratio) (12 teeth)	46460
22	Washer	46379-1	61	Spindle Assembly (2.89:1 ratio) (direct drive)	47268
23	Spring	41100	62	Planet Gear (3) (6.67:1 ratio) (21 teeth) (requires item 45)	46901
24	Valve Bushing	46381	63	Spindle Assembly (6.67:1 ratio) (direct drive)	47271
25	Reverse Valve	46299	64	Ring Gear (single reduction)	
26	Trigger	46298		for Straight models	48905
27	Pistol Grip Housing	49711		for Pistol Grip models	48905
28	Filler	46851	65	Spindle Assembly (4.4:1 ratio)	
29	Muffler Assembly	46857		for Cushion and Auto Shut-Off Clutch models	47753
30	Inlet Adapter	46385		for Positive Jaw Clutch models	47799
31	Throttle Rod		66	Spindle Assembly (3.43.1 ratio)	
	for model 41SC25PS (4.180" long)	46511-3		for Auto Shut-Off Clutch models	47752
	for models 41SC8PS, 41SC10PS and 41SC17PS (4.690" long)	46511-4		for Positive Jaw Clutch models	47798
	for model 41SA25PS (4.235" long)	46511-423	67	Spindle Assembly (2.89.1 ratio)	
	for models 41SA8PS, 41SA10PS and 41SA17PS (4.740" long)	46511-474		for Cushion and Auto Shut-Off Clutch models	47751
	Motor Assembly (includes items 32 through 39)			for Positive Jaw Clutch models	47797
	Push Start models		68	Spindle Assembly (6.67:1 ratio)	
	for 800, 1000 and 1700 rpm models	47726		for Cushion and Auto Shut-Off Clutch models	47750
	2500 rpm models	47725		for Positive Clutch models	47800
	Lever and Pistol Grip models			for Positive Clutch models	47694
	for 800, 1000 and 1700 rpm models	47728	70	Snap Ring	Y142-2
	for 2500 rpm models using Direct Drive	47727		Cushion Clutch Assembly (includes items 71 thru 88)	
	using Positive Clutch	47725		for 800, 1000 and 1700 rpm models (Blue Spring)	47254- 1
		47724		for 2500 rpm models (Yellow Spring)	47254-3
32	Ball Bearing	47724	71	Snap Ring	Y110-105
33	Rear End Plate	46312-1	72	Adjustment Nut	46895
35	Vane (5)	46413-5	73	Adjustment Washer	46896
36	Rotor		74	Clutch Spring (Cushion Clutch)	
	Push Start models			for 800 and 1000 rpm models (Blue) (15-80 in. lbs.)	46728
	for 800,1000 and 1700 rpm models (thru hole) hex drive	46453		for 1700 rpm models (Blue) (15-60 in. lbs.)	46728
	for 2500 rpm models (thru hole) spline drive	46469		for 2500 rpm models (Yellow) (10-40 in. lbs.)	7066
	Straight and Pistol Grip models			Clutch Spring (Gray) (45-100 in. lbs.)	46473
	for 800,1000 and 1700 rpm models (hex drive)	46454			
	for 2500 rpm models (spline drive) using Direct Drive or Adjustable Ball Clutch	46470			
	using Positive Clutch (thru hole)	46469			
37	Cylinder	46311			
38	Front End Plate	47722			
39	Ball Bearing	Y65-13			

## 41-EU Series Air Screwdriver - Parts List (Continued)

75	Snap Ring	Y110-106	108	Retaining Ring	48300-1
76	Thrust Pad	46516	109	Spring	47709
77	Thrust Washer (2)	46892	110	Spring	48333-1
78	Thrust Bearing	38995	111	Jaw	
79	Ball Carrier	46515		for 20" Positive Jaw Clutch models	47176-1
80	O-ring	Y325-1	112	Retaining Ring	Y145-3
81	Spindle	47255	113	Pin Assembly	47182
82	Ball (10)	Y16-205	114	Retaining Ring	47779
83	Driven Jaw	46441	115	Spring	47778
84	Ball (16)	Y16-203	116	Bushing	47775
85	Ball Race	46502	117	Sleeve	47702
86	Retaining Ring	46507	118	Gearing Assembly (800 rpm) Direct Drive	47350-1
87	Spring	46854	119	Gearing Assembly (800 rpm)	
88	Pin Assembly	46855		for Positive Clutch models	47350-5
89	Bit Holder Assembly (includes items 48 and 49)			for Cushion Clutch and Auto Shut-Off Clutch models	47350-9
	for Cushion Clutch models	47267			
	for 20" Positive Clutch models	47272	120	Gearing Assembly (1000 rpm) Direct Drive	47350-2
90	Bushing	46360	121	Gearing Assembly (1000 rpm)	
91	Clutch Housing (includes items 90 and 92)			for Positive Clutch models	47350-6
	for Straight models with Q4 drive (steel) (3-314" long)	47749		for Cushion Clutch and Auto Shut-Off Clutch models	47350-10
	for Pistol Grip models with Q4 drive (aluminum) (3-314" long)	48901	122	Gearing Assembly (1700 rpm) Direct Drive	47350-3
92	External Adjustment Sleeve	46534	123	Gearing Assembly (1700 rpm)	
93	Retaining Clip and Pin	47782		for Positive Clutch models	47350-7
	Auto Shut-Off Clutch Assembly (includes items 48, 49, 71, 72, and 94 thru 110)			for Cushion Clutch and Auto Shut-Off Clutch models	47350-11
	for 800 and 1000 rpm models with Yellow Spring	48303-1	124	Gearing Assembly (2500 rpm) Direct Drive	47350-4
	for 1700 rpm models with Brown Spring	48303-2	125	Gearing Assembly (2500 rpm)	
	for 2500 rpm models with Green Spring	48303-3		for Positive Clutch models	47350-8
94	Adjustment Washer	48093		for Cushion and Auto Shut-Off Clutch models	47350-12
95	Clutch Spring (Auto Shut-Off Clutch)		126	Positive Clutch Housing (includes item 90)	49253
	for 800 rpm models (Yellow) (35-100 in. lbs.)	48047	127	Direct Clutch Housing (includes item 90)	47788
	for 1000 rpm models (Yellow) (35-80 in. lbs.)	48047		Guide Assembly (Direct Drive and Auto Shut-off Clutch models)	
	for 1700 rpm models (Brown) (25-60 in. lbs.)	48095		Quick-Change Sleeve Assembly (includes items 114 thru 117)	46884
	for 2500 rpm models (Green, 15-40 in. lbs.)	48096	130	Sleeve	47702-1
96	Retaining Ring (2)	Y145-18		Guide Assembly (Cushion and Positive Clutch models)	
97	Guide	48295-1		Quick-Change Sleeve Assembly (includes items 114,115,116 and 130)	46884-1
98	Spring	47064	#	Service Kit (includes items 3, 4 [2], 8, 9 [2], 11, 14, 16, 19, 20, 21-a, 21-c, 23, 28, 29, 35 [5], 40, 48, 49, 54, 69, 70, 71, 75, 80, 82 [lo], 84 [16], 87, 96 [2], 104 [6], 105 [23] 106 [6], 108, 109 and 110)	47353
99	Ball Sleeve	48294-1			
100	Thrust Race	48094	#	Warning Label	
101	Thrust Race	48301-1		for models ending in -EU	EU-99
102	Plunger	48293-2		for all other models	WARNING-5-99
103	Spindle	48299-1	#	CE Label	49882
104	Ball (6)	Y16-203	#	Rotation Label	49884
105	Ball (23)	Y16-204	#	Forward-Reverse Label	49931
106	Ball (6)	Y16-206			
107	Bit Holder	48298-1			

# Not Illustrated.

## Parts and Maintenance

When the life of the tool has expired, it is recommended that the tool be disassembled, degreased and parts be separated by material so that they can be recycled.

Tool repair and maintenance should only be carried out by an authorized Service Center.

Refer all communications to the nearest **Ingersoll Rand** Office or Distributor.

## Related Documentation

For additional information refer to:

Product Safety Information Manual 04585006.

Product Information Manual 47135462.

Maintenance Information Manual 47135740.

Manuals can be downloaded from [ingersollrandproducts.com](http://ingersollrandproducts.com).

[ingersollrandproducts.com](http://ingersollrandproducts.com)

© 2013 *Ingersoll Rand*

