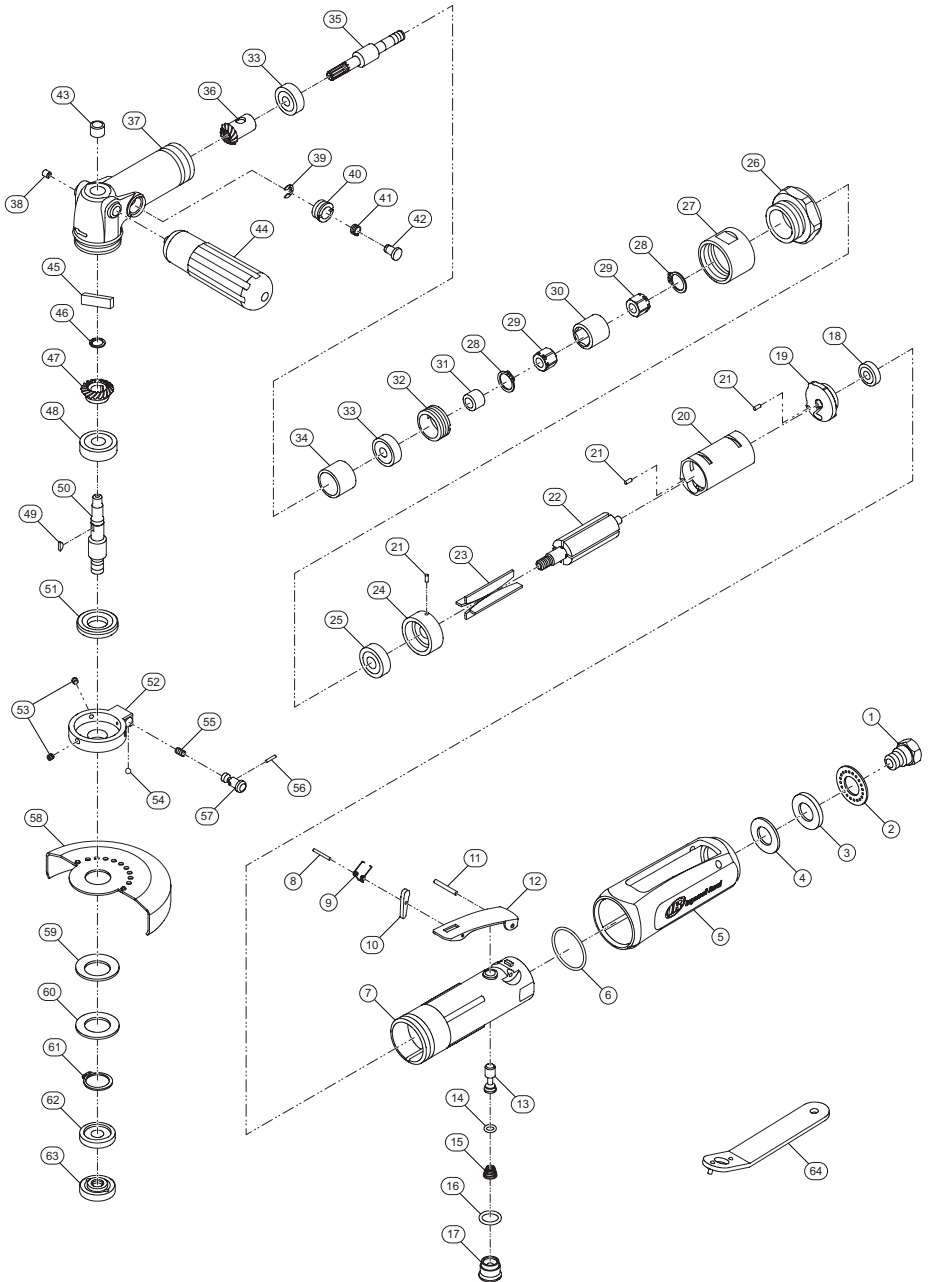


# 444, Air Grinder - Exploded View



(Dwg. TL-444-PLM-1)



**TL-444-PLM**  
Edition 2  
June 2023

## 444, Air Grinder - Parts List

Item	Part Description	Part Number	Item	Part Description	Part Number
*	Inlet Bushing Assembly	TA-444-565	36	Bevel Gear	TP-444-009
1	Air Inlet	---	*	Angle Head Assembly	TA-444-240
2	Exhaust Diffuser	---	37	Front Housing	---
3	Muffler	---	38	Oil Cap	---
4	Muffler	---	39	Retaining Ring	---
5	Grip	TP-444-747	40	Button Seat	---
6	O-Ring	TP-444-065	41	Spring	---
7	Motor Housing	TP-444-040	42	Stop Button	---
*	Lever Assembly	TA-444-093	43	Needle Bearing	---
8	Spring Pin	---	44	Side Handle	TP-444-048
9	Spring	---	45	Felt Oiler	TP-444-311
10	Safety Bar	---	46	Snap Ring	TP-444-405
11	Spring Pin	---	47	Bevel Gear	TP-444-010
12	Throttle Lever	---	48	Ball Bearing	TP-444-097
13	Valve Shaft	TP-444-303	49	Key	TP-444-253
14	O-Ring	TP-444-282	50	Spindle	TP-444-807
15	Valve Spring	TP-444-051	51	Lock Nut	TP-444-378
16	O-Ring	TP-444-367	*	Guard Kit	TA-444-106
17	Plug	TP-444-229	52	Cover Seat	---
18	Ball Bearing	TP-444-022	53	Set Screw (3 required)	---
19	Rear End Plate	TP-444-012	54	Steel Ball	---
20	Cylinder	TP-444-003	55	Spring	---
21	Spring Pin (3 required)	TP-444-504	56	Spring Pin	---
22	Rotor	TP-444-053	57	Lock Bar	---
23	Rotor Blade (4 required)	TP-444-042	58	Disc Cover	---
24	Front End Plate	TP-444-011	59	Washer	---
25	Ball Bearing	TP-444-024	60	Spring Washer	---
26	Clamp Nut	TP-444-582	61	Retaining Ring	---
27	Connector Nut	TP-444-588	*	Guard Warning Label	TP-444-99G
28	Retaining Ring (2 required)	TP-444-338	62	Flange	TP-444-337
29	Nut (2 required)	TP-444-027	63	Flange Nut	TP-444-218
30	Connector	TP-444-304	64	Pin Wrench	TP-444-026
31	Spacer	TP-444-080	†	Tune-Up Kit Includes Items (2, 3, 4, 6, 14, 15, 16, 18, 23, 25, 28, 33, 45, and 48)	TK-444-GTK
32	Lock Nut	TP-444-305			
33	Ball Bearing (2 required)	TP-444-722	* Indicates not illustrated.		
34	Spacer	TP-444-111	† Indicates common-wear parts. Maintain stock to reduce downtime.		
35	Spindle	TP-444-108			

## Parts and Maintenance

When tool life has expired, it is recommended that the tool be disassembled, degreased and parts separated by material for proper recycling.

Tool repair and maintenance should only be carried out by an Authorized Service Center.

Refer all communications to the nearest **Ingersoll Rand** office or distributor.

## Related Documentation

Manuals can be downloaded from [ingersollrand.com](http://ingersollrand.com)

For additional information, refer to:

Product Safety Information Manual 04584959

Product Information Manual TL-444-PIM

Declaration of Conformity TL-444-DOC