



**16574071**  
Edition 5  
May 2015

# **Air Grinder, Sander and Polisher**

**77A Series**

---

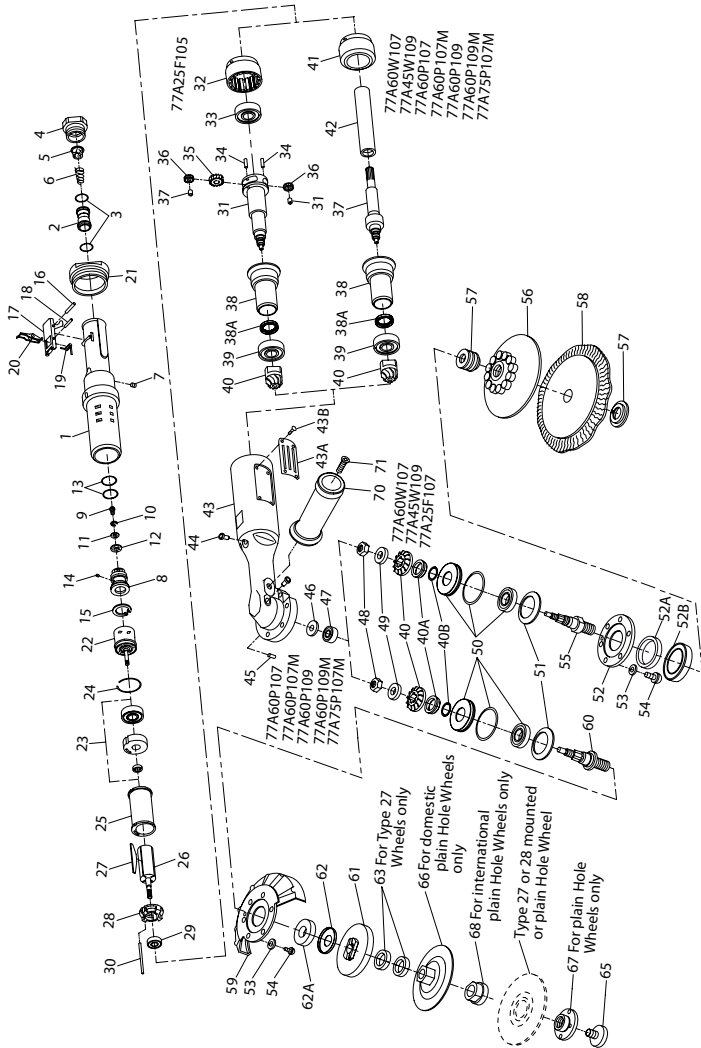
## **Parts Information**



**Save These Instructions**

 **Ingersoll Rand®**

# 77A Angle Grinder, Sander and Polisher Exploded Diagram



(Dwg. TPA793-7)

## 77A Angle Grinder, Sander and Polisher Parts List

Item	Part Description	Part Number	Item	Part Description	Part Number
1	Throttle Handle Assembly	77H-A160	43B	Nameplate Screw (4)	BN403-302
2	Throttle Valve Assembly	88V60-A302	*	Warning Label	
† • 3	Seal (2)	C321-606		for Grinders ending in -EU	EU-99
4	Inlet Bushing	77H-38		for all other Grinders	WARNING-4-99
† • 5	Inlet Bushing Screen	834-61		for Sanders and Polishers ending in -EU	EU-99
† 6	Throttle Valve Spring	77H-262		for all other Sanders and Grinders	WARNING-5-99
7	Oil Chamber Plug	R2-227	44	Grease Fitting (2)	130SR-188
8	Throttle Valve Seat Support Assembly	77H-A303	45	Mounting Plate Pin	77A-31
9	Valve Seat Screw	PS3-83	• 46	Upper Bearing Spring Washer	4U-278
10	Valve Seat Lock Washer	H54U-352	• 47	Upper Arbor Bearing	WWA100-97
11	Valve Seat Washer	99V-155	48	Bevel Gear Nut	77A-578
† • 12	Valve Seat	R4-159A	49	Bevel Gear Spacer	77A-25
† 13	Valve Support Seal (2)	SPP101-743	50	Arbor Lower Bearing Assembly	77A-A593
14	Oiler Feeder Plug	77H-75	51	Lower Arbor Spring Washer	77A-307
15	Throttle Valve Seat Support Retainer	W64-118	52	Sander Arbor Retaining Plate	77A-55
16	Throttle Lever Pin	MR-100	52A	Washer	R4-35
17	Throttle Lever Assembly	77H-A400	52B	Felt Wiper Cup	77A-35B
18	Lever Lock Pin	R100B-120	53	Screw Lock Washer (6)	88H60-67
19	Lever Lock Spring	DG120-405	54	Guard Screw or Retaining Plate Screw (6)	77H-638
20	Lever Lock	DG120-402	55	Sander Arbor	77A-204-P10
21	Coupling Nut	77H-282	56	Sanding Pad Assembly	
† 22	Controller Assembly (Consists of Controller and Rear End Plate Assembly)			with 5" Sanding Pad	77A-AM825-5
	for 77A45W109	77H90-A524RH		with 7" Sanding Pad (medium)	77A-AM825-7
	for 77A60W107, 77A60P107, 77A60P107M, 77A60P109 and 77A60P109M	77H120-A524RH		with 7" Sanding Pad (firm)	77A-BM825-7
				with 9" Sanding Pad	77A-AM825-9
			57	Pad Mounting Kit	77A-826
			58	Wool Bonnet (for 77A25F107)	P500-850
23	Rear End Plate Assembly (consists of rear end plate, rotor bearing and required spacers)	77H-A12	59	Depressed Center Wheel Guard	
				for 7" diameter wheels	77A-106-7
				for 9" diameter wheels	77A-106-9
† • 24	Rear End Plate Gasket	77H-739	60	Depressed Center Wheel Arbor	77A-4-B10
25	Cylinder	77H-3	61	Autobalancer Assembly	99V60-A713
26	Rotor	77H-53RH	*	Autobalancer Wrench (7/8" single end; open-end wrench)	88V60-169
† • 27	Vane Packet (set of 4 Vanes)	77H-42-4	62	Felt Wiper Cup	77A-35B
• 28	Front End Plate	77H-11	62A	Dust Washer	R4-35
29	Front Rotor Bearing	77H-24	63	Depressed Center Wheel Spacer (2 for all Type 27 Mounted Wheels)	99V-286
30	Cylinder Dowel	77H-98	65	Wheel Retaining Screw (for all Type 27 and 28 Wheels)	99V60-219
31	Bevel Pinion Driver		66	Depressed Center Wheel Flange (for Type 27 & 28 Plain Hole Wheels)	99V60-386
	for 77A25F107	77A-8	67	Depressed Center Wheel Nut (for Type 27 and 28 Plain Hole Wheels)	99V85-186
	for all others	77A-7	*	Depressed Center Wheel Nut Spanner Wrench	D32-26
32	Internal Gear	77H-406	*	Wheel Flange Wrench (for all Grinders)	7RAQT4-254
33	Bevel Pinion Driver Bearing	WFS182-97	68	Depressed Center Wheel Flange (for 77A60P107M, 77A60P109M and 77A75P107M with Type 27 and Type 28 Plain Hole Depressed Center Wheels)	99V60-386-M
34	Planet Gear Shaft (2)	G700-191	70	Dead Handle	88V60-48
35	Rotor Pinion	77H-17	71	Dead Handle Screw	88V60-634
36	Planet Gear Assembly (2)	77H-A10	72	Nameplate	66H-301
37	Planet Gear Bearing (one for each gear)	G700-654	73	Nameplate Screw (4)	BN403-302
38	Thrust Spacer	77A-104	*	Bearing Clamp Assembly	77H-A952
38A	Seal, Grease	77A-271	*	Controller Wrench	77H-950
39	Bevel Pinion Bearing Assembly	77A-A510	*	Throttle Valve Seat Support Retainer Pliers	77H-154
40	Matched Gear Set (Bevel Gear and Pinion not sold separately)	77A-A552	*	Coupling Nut Wrench	77H-281
40A	O-ring	DAA40-606	*	1/2" Pipe Tap Inlet Bushing	88V60-38
40B	Seal, V-ring	77A-720	*	Vibra-Tite*** 0.6 cc	5R-VT06
41	Motor Spacer	77E-208-H8	*	Adhesive Kit	77H-KVLT
42	Arbor Coupling	66H-304		Tune-up Kit includes illustrated parts: (3 [2], 5, 6, 12, 13 [2], 24 and 27)	77H/77A-TK3
† 43	Angle Arbor Housing			* Grease, Mobilux-EPO	77A-EPO
	for models ending in -EU	77A-EU-A40-P10			
	for all other models	77A-A40-P10			
43A	Nameplate Kit				
	for models ending in -EU	77A-EU-K301			
	for all other models	77A-K301			

\* Indicates Not Illustrated.

• Indicates common-wear parts. Maintain stock to reduce downtime.

‡ Whenever a new Angle Arbor Housing is installed, select the correct Nameplate from the Nameplate Kit (43A) and attach it to the Housing with the Nameplate screws (43B).

† Indicates Tune-up Kit part.

# Early models of these Grinders had Rotors and Controller Assemblies with left-hand threads. If you have a model with left-hand threads, contact **Ingersoll Rand** when ordering replacement parts.

\*\*Registered trademark of ND Industries.

---

## Parts and Maintenance

When tool life has expired, it is recommended that the tool be disassembled, degreased and parts separated by material for proper recycling.

Tool repair and maintenance should only be carried out by an authorized Service Center.

Refer all communications to the nearest **Ingersoll Rand** office or distributor.

---

## Related Documentation

Manuals can be downloaded from [ingersollrandproducts.com](http://ingersollrandproducts.com)

For additional information, refer to:

Air Grinder, Sander and Polisher Product Safety Information Manual 04580387 and 04584959.

Air Grinder, Sander and Polisher Product Information Manual 80221740, 80221757, 80221765 and 80221773.

Air Grinder, Sander and Polisher Maintenance Information Manual 16575128.

**Notes:**

---

---

**Notes:**

**Notes:**

---

[ingersollrandproducts.com](http://ingersollrandproducts.com)

© 2015 Ingersoll Rand

