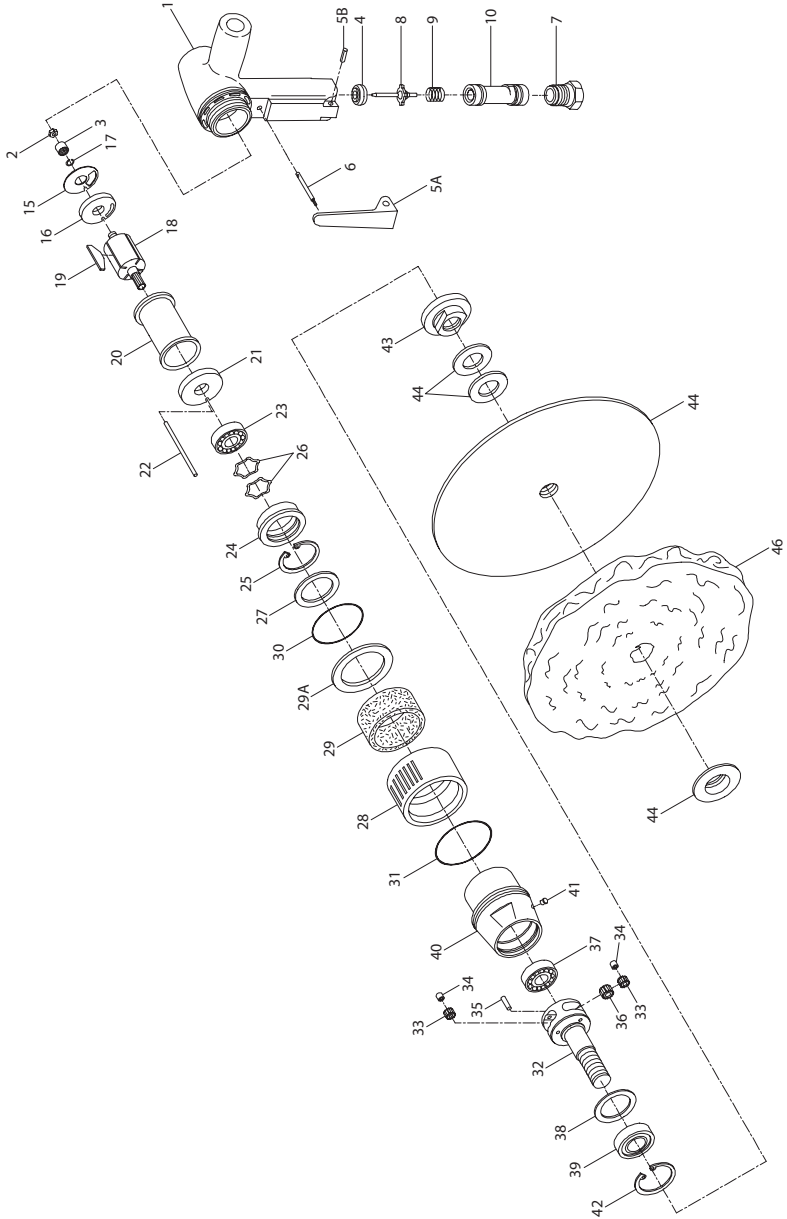


7P24L, 7S30L, 7S48L, 7S60L Sander and Polisher - Exploded View



(Dwg. TPA908-6)

7P24L, 7S30L, 7S48L, 7S60L Sander and Polisher - Parts List

Item	Part Description	Part Number	Item	Part Description	Part Number	
† 1	Motor Housing Assembly		31	Exhaust Deflector Front Seal	AF160-291Z	
	for Models 7S60L, 7S48L, 7S30L and 7P24L	7S60L-A40		Arbor Assembly		
	for Models 7S60L-EU, 7S48L-EU, 7S30L-EU and 7P24L-EU	7S60L-EU-A40			for Model 7S60L	7S60-A4
*	Nameplate Kit			for Model 7S48L	7S48-A4	
	for models ending in -EU	7S-EU-K301		for Model 7S30L	7S30-A4	
	for all other models	7S-K301	32	Arbor	7P24-A4	
*	Nameplate Screw (2)	BN403-302		for Model 7S60L	7S60-4	
*	Warning Label			for Model 7S48L	7S48-4	
	for models ending in -EU	EU-99		for Model 7S30L	7S30-4	
	for all other models	WARNING-5-99		for Model 7P24L	7P24-4	
2	Bearing Nut	7AH-105	33	Arbor Planet Gear Assembly (3)		
3	Rear Rotor Bearing	7AH-24			for Model 7S60L	7AH-A10
4	Throttle Valve Seat	2908-303		for Model 7S48L	7AJ-A10	
5A	Throttle Lever (for Models 7S60L, 7S48L, 7S30L and 7P24L)	7S60L-273		for Model 7S30L	7AK-A10	
				for Model 7P24L	7AL-A10	
5B	Throttle Lever Pin (for Models 7S60L, 7S48L, 7S30L and 7P24L)	7L-120	34	Planet Gear Bearing (1 for each Gear)		
6	Throttle Plunger (for Models 7S60L, 7S48L, 7S30L and 7P24L)	7S60-94			for Model 7S60L	7AH-500
					for Model 7S48L	7AJ-500
				for Models 7S30L and 7P24L	7AK-500	
7	Inlet Bushing	402-565	35	Arbor Planet Gear Shaft (3)		
8	Throttle Valve	LG2-302			for Model 7S60L	R31-121
9	Throttle Valve Spring	7S60-51			for Model 7S48L	7S48-191
10	Valve Spring Spacer	2905P-198			for Models 7S30L and 7P24L	7P24-191
15	Rear End Plate Gasket	7AH-739	36	Rotor Pinion		
16	Rear End Plate	7AH-12			for Model 7S60L	7AH-17
17	Rear End Plate Retainer	7AH-118			for Model 7S48L	7AJ-17
18	Rotor		37	Rear Arbor Bearing	7S60-97	
	for Model 7S30L	7S30-53	38	Arbor Bearing Spacer	7AH-81	
	for all others	7S60-53	39	Front Arbor Bearing	R2H-97	
19	Vane Packet (set of 4 Vanes)	7RL-42-4	40	Gear Case Assembly	7S60-A37	
20	Cylinder	7AH-3A	41	Grease Fitting	DOF9-879	
21	Front End Plate	7AH-11	42	Arbor Bearing Retainer	S12-118	
22	Cylinder Dowel	7AH-98	43	Inner Wheel Flange	7S60-86	
23	Front Rotor Bearing	R1-22	44	Sanding Pad Assembly (firm)	77A-BM825-7	
24	Front Rotor Bearing Housing	7S60-13	46	Wool Pad (for 7P24L)	P500-850	
25	Front Rotor Bearing Retainer	W22-118	*	Arbor Wrench (15/16")	7RAQT4-254	
26	Bearing Spring Washer (2)	7AH-278	*	Nameplate	7S60-301	
27	Bearing Housing Spacer	7AH-81	*	Nameplate Screw (2)	BN403-302	
28	Exhaust Deflector	7S60-23A	*	Tune-up Kit (consists of illustrated parts, 4, 8, 9 15, 17, 19, 29, 30 and 31)	7S60-TK2	
29	Exhaust Silencer	7S60-311				
29A	Exhaust Diffuser	7S60-123	*	Warning Label	TA-7S60	
30	Exhaust Deflector Rear Seal	DG20-103	*	Sanding Pad Assembly (medium)	77A-AM825-7	

† Whenever a new Motor Housing Assembly is installed, select the correct Nameplate from the Nameplate Kit and attach it to the Housing with the Nameplate Screws.

* Indicates not illustrated.

Parts and Maintenance

When tool life has expired, it is recommended that the tool be disassembled, degreased and parts separated by material for proper recycling.

Tool repair and maintenance should only be carried out by an authorized Service Center.

Refer all communications to the nearest **Ingersoll Rand** office or distributor.

Related Documentation

Manuals can be downloaded from ingersollrand.com

For additional information, refer to:

Product Safety Information Manual 04580387

Product Information Manual 03529385

Product Maintenance Information Manual 16575045