



16574592
Edition 3
February 2014

Air Screwdrivers

41 Series

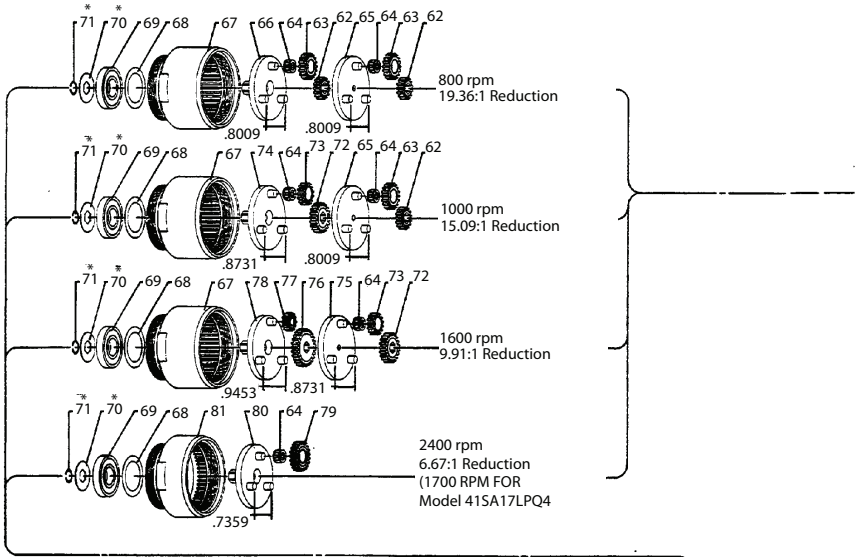
Parts Information



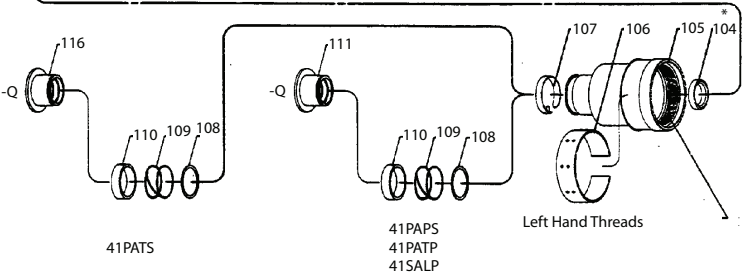
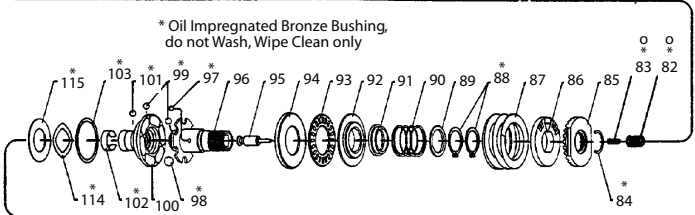
Save These Instructions

 **Ingersoll Rand**[®]

41 Series, Air Screwdriver - Exploded View

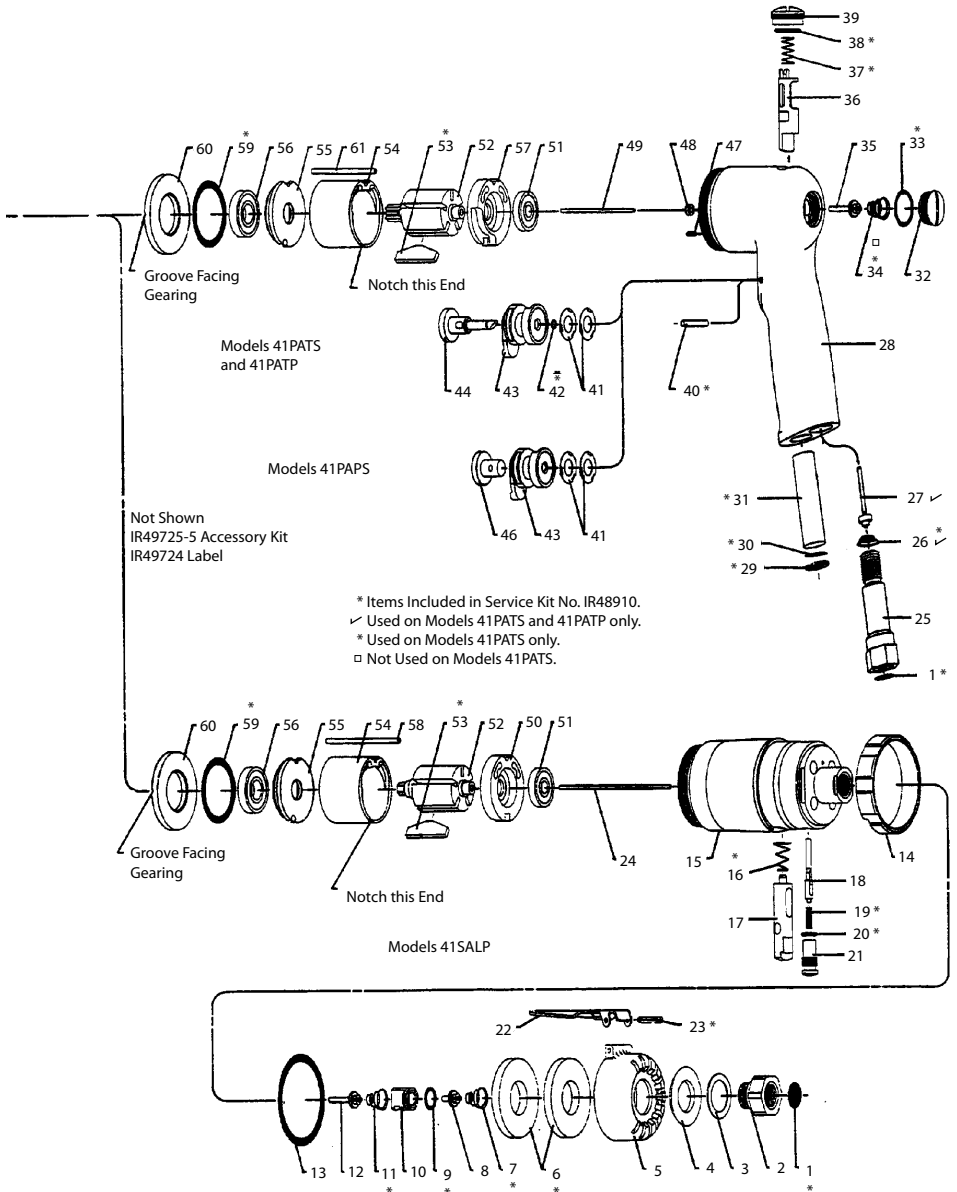


* Oil Impregnated Bronze Bushing,
do not Wash, Wipe Clean only



(Dwg. TPA898-4)

41 Series, Air Screwdriver - Exploded View



(Dwg. TPA898-4)

41 Series, Air Screwdriver - Parts List

Item	Part Description	Part Number	Item	Part Description	Part Number
1	Screen	IR33911		Motor Assembly	
2	Inlet Adapter	IR46377		Lever Throttle models (includes items 50 through 56)	
3	Spacer	IR47205		for models 41SA8LP, 41SA10LP and 41SA17LP	IR47726
4	Diffuser Washer	IR46449		for model 41SA25LP	IR47725
5	Exhaust Cap	IR46448		Pistol Grip models (includes items 51 through 57)	
6	Filler (2)	IR46452		for models 41PA8PS, 41PA10PS, 41PA16PS, 41PA8TS, 41PA10TS, 41PA16TS, 41PA8TP, 41PA10TP and 41PA16TP	IR48159-1
7	Spring	IR411654		for models 41PA24PS, 41PA24TS and 41PA24LP	IR48158-1
8	Valve Assembly	IR46354-2			
9	O-Ring	IRY325-11	50	Rear End Plate	IR46312-1
10	Valve Block	IR48335-1	51	Bearing	IR47724
11	Spring	IR411654	52	Rotor	
12	Valve Assembly	IR46354-1		Lever Throttle models	
13	O-Ring	IR48347-1		for 41SA25LP	IR46469
14	Reverse Sleeve	IR48337-2		for all other lever throttle models	IR46453
15	Head and Bushing Assembly	IR49720		Pistol Grip models	
16	Spring	IR411654		for 41PA24P, 41PA24TS and 41PA24LP	IR46469
17	Valve Body	IR48349-2		for all other pistol grip models	IR46453
18	Valve Stem	IR48342-2	53	Vane (5)	IR46413-5
19	Spring	IR31058	54	Cylinder	IR46311
20	O-Ring	IRY325-10	55	Front End Plate	IR47722
21	Cap	IR48338-2	56	Bearing	IRY65-13
22	Lever	IR48246-1	57	Rear End Plate	IR48162-1
23	Roll Pin	IRY178-28	58	Locating Pin (lever throttle models)	IR47723-2
24	Throttle Rod (lever throttle models)		59	O-Ring	IRY325-214
	for 800, 1000 and 1700 rpm models (4.452" long)	IR46511-445	60	Spacer	IR46412
	for 2500 rpm models (3.942" long)	IR46511-394	61	Locating Pin (pistol grip models)	IR47723-1
25	Inlet Adapter	IR46385	62	Sun Gear (1 or 2) (4.4:1 ratio) (15 teeth)	IR46466
26	Spring	IR411654	63	Planet Gear (3 or 6) (4.4:1 ratio) (18 teeth)	IR46900
27	Valve Rod Assembly	IR46354	64	Needle Bearing (3 or 6)	IR42315
28	Housing		65	Carrier Assembly (4.4:1 ratio)	IR46522
	for model 41PA8PS	IR49712	66	Spindle Assembly (4.4:1 ratio)	IR47753
	for models 41PA8TS and 41PA8TP	IR49713	67	Ring Gear (double reduction)	IR48904
29	Retaining Ring	IRY147-56	68	Spacer	IR46496
30	Screen	IR48808-1	69	Bearing	IRY65-13
31	Muffling	IR48443-1	70	Washer	IR47694
32	End Cap	IR48146-1	71	Snap Ring	IRY142-2
33	O-Ring	IRY325-15	72	Sun Gear (3.43:1 ratio) (21 teeth)	IR46465
34	Spring	IR411654	73	Planet Gear (3) (3.43:1 ratio) (15 teeth)	IR46899
35	Valve Rod Assembly	IR46354	74	Spindle Assembly (3.43:1 ratio)	IR47752
36	Reverse Valve	IR48133-1	75	Carrier Assembly (3.43:1 ratio)	IR46521
37	Spring	IR48304-1	76	Sun Gear (2.89:1 ratio) (27 teeth)	IR46464
38	O-Ring	IRY325-12	77	Planet Gear (3) (2.89:1 ratio) (12 teeth)	IR46460
39	Top Cap	IR48145-1	78	Spindle Assembly (2.89:1 ratio)	IR47751
40	Pin (for 41PA models only)	IR49754	79	Planet Gear (3) (6.67:1 ratio) (21 teeth)	IR46901
41	Spring (2)	IR48138-1	80	Spindle Assembly (6.67:1 ratio)	IR47750
42	O-Ring	IR48139-1	81	Ring Gear (single reduction)	IR48905
43	Reverse Cam	IR48132-1	82	Spring	IR47709
44	Trigger	IR48148-1	83	Spring	IR48333-1
46	Button	IR48149-1		Auto Shut-Off Clutch Assembly	
47	Roll Pin	IRY178-211		for models 41PA8PS, 41PA8TP and 41SA25LP (includes items 82 and 83 and 84 thru 103)	IR48303-3
48	Bushing	IR48362-1		for models 41PA24TS (includes items 84 thru 103)	IR48303-7
49	Throttle Rod (pistol grip models) (800, 1000 and 1600 rpm models) (3.942" long)	IR46511-394			
	(2400 rpm models) (3.410" long)	IR46511-341			

* Not Illustrated.

41 Series, Air Screwdriver - Parts List

Item	Part Description	Part Number	Item	Part Description	Part Number
84	Snap Ring	IRY110-105	105	Clutch Housing (includes items 104 and 106)	
85	Adjustment Nut	IR46895		for lever throttle models	IR48901
86	Adjustment Washer	IR48093		for pistol grip models	IR48901
87	Clutch Spring		106	External Adjustment Sleeve	IR46534
	for models 41PA8PS, 41PA10PS, 41PA8TS, 41PA10TS, 41PA8TP, 41PA10TP, 41SA8LP and 41SA10LP	IR48047	107	Retaining Clip and Pin	IR47782
			108	Retaining Ring	IR47779
			109	Spring	IR47778
	for models 41PA16PS, 41PA16TS, 41PA16TP and 41SA17LP	IR48095	110	Bushing	IR47775
			111	Sleeve	IR47702
	for models 41PA24PS, 41PA24TS, 41PA24TP and 41SA25LP	IR48096	114	Wave Washer	IR45645
			115	Thrust Bearing Race	IR42364
88	Retaining Ring (2)	IRY145-18	116	Sleeve	IR47702-1
89	Guide	IR48295-1		Service Kit (includes items 1, 6[2], 7, 9, 11, 16, 19, 20, 23, 26, 29, 30, 31, 33, 34, 37, 38, 40, 42, 53, 59, 70, 71, 82, 83, 84, 88, 97 [6], 98 [6], 99 [23], 101, 102 and 103)	IR48910
90	Spring	IR47064			
91	Ball Sleeve	IR48294-1			
92	Thrust Race	IR48094	*	Accessory Kit	IR49725-6
93	Thrust Bearing	IR38995	*	Clutch Spring	IR48095
94	Thrust Race	IR48301-1	*	Clutch Spring	IR48047
95	Plunger	IR48293-2	*	Clutch Spring	IR48096
96	Spindle	IR48299-1	*	Clip Bail	IR48426-1
97	Ball (6)	IRY16-203	*	Bag	IR49746
98	Ball (6)	IRY16-206	*	Warning Label	
99	Ball (23)	IRY16-204		for all models ending in -EU	EU-99
100	Bit Holder	IR48298-1		for all other models	WARNING-5-99
101	Ball	IRY16-204	*	CE Label	IR49882
102	Retaining Clip	IR47695	*	Rotation Label	IR49884
103	Retainer Ring	IR48300-1	*	Forward-Reverse Label	IR49931
104	Bushing	IR46360			

* Not Illustrated.

Parts and Maintenance

When the life of the tool has expired, it is recommended that the tool be disassembled, degreased and parts be separated by material so that they can be recycled.

Tool repair and maintenance should only be carried out by an authorized Service Center.

Refer all communications to the nearest **Ingersoll Rand** Office or Distributor.

Related Documentation

For additional information refer to:

Product Safety Information Manual 04585006.

Product Information Manuals 80167356, 80167364.

Product Maintenance Information Manual 16575284.

Manuals can be downloaded from ingersollrandproducts.com.

Notes:

Notes:

ingersollrandproducts.com

© 2014 *Ingersoll Rand*

