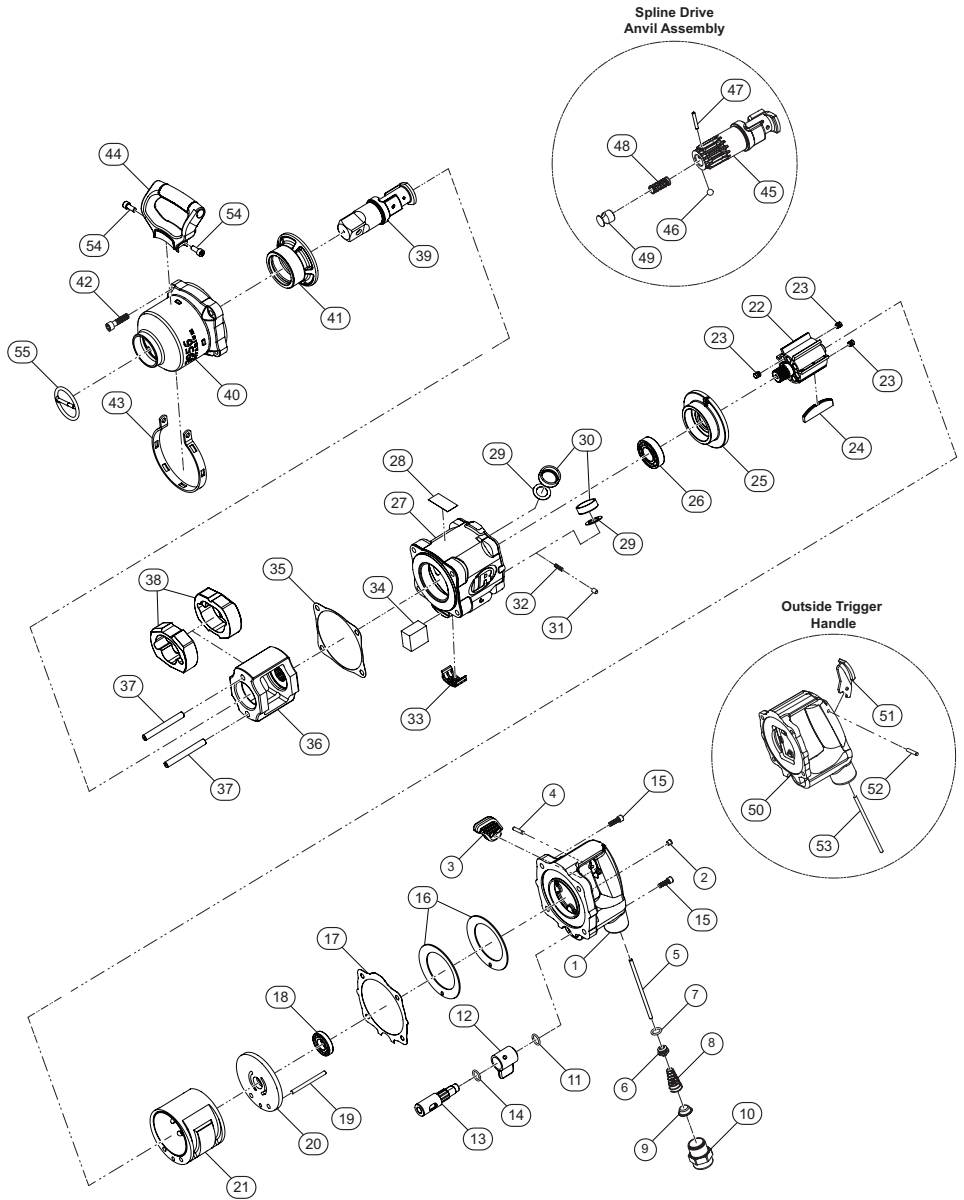


3956 Series, Air Impact Wrench - Exploded View



(Dwg. TL-3956-PLM-1)



TL-3956-PLM
Edition 2
January 2023

3956 Series, Air Impact Wrench - Parts List

Item	Part Description	Part Number	Item	Part Description	Part Number
1	Inside Trigger Handle Assembly	TD-3956-K92	† 32	Reverse Lock Plunger Spring	4U-664-10
2	Grease Fitting	131-188	33	Exhaust Deflector	3940-123
3	Trigger	TP-2955-93RD	† 34	Exhaust Silencer	3940P-311
4	Trigger Pin	280-265	† 35	Hammer Case Gasket	3955-36
5	Throttle Valve Plunger	3955-302	36	Hammer Frame Assembly	2950-A703
6	Throttle Valve Assembly	2934-A50	37	Hammer Pin (2 required)	2950-704
† # 7	Throttle Valve Seal	2934-159	38	Hammer (2 required)	TP-2955-724
† 8	Throttle Valve Spring	834-51-5	39	1-1/2" Square Drive Anvil, Standard Length	2950-726
† # 9	Air Strainer Screen	434-61	40	Hammer Case Assembly	
10	Straight Inlet	845-565		for 3956A2Ti, 3956B1Ti and 3956B2Ti	TP-3956Ti-727
† # 11	Reverse Valve Seal	R00BR-210	41	Hammer Case Bushing	
12	Reverse Lever	TP-2955-75RD		for 3956A2Ti, 3956B1Ti and 3956B2Ti	TP-3955-641
13	Reverse Valve	3955-329		for 3956B2TiEX	TP-3956EX-641
† # 14	Reverse Valve Bushing Seal	85H-167	42	Hammer Case Cap Screw (4 required)	3955-105
15	Handle Cap Screw (4 required)	3955-638	43	Strap, Aux Handle	TP-3956Ti-364
16	Motor Clamp Washer (2 required)	MR-207	44	Handle, Auxiliary	TP-3956Ti-048
† # 17	Handle Gasket	3955-283	45	Spline Drive Anvil Assembly	VW-1030
† 18	Rear Rotor Bearing	834-24	† 46	Socket Retaining Ball	D04-280
19	Cylinder Dowel	2950-98	† 47	Plunger Retaining Pin	845-128
20	Rear End Plate	2950-12	† 48	Retaining Plunger Spring	2940-231-5
21	Cylinder	2950-3	49	Retaining Ball Plunger	845-230
22	Rotor Assembly	TD-3956Ti-53	50	Outside Trigger Handle Assembly (includes 2, 6, 7, 8, 9, 10, 11, 51, 52, and 53)	3955-A1
23	Plug, Rotor (14 required)	2850-229			
† # 24	Vane Packet (set of 7)	TP-2955-042	51	Trigger	844-78
25	Front End Plate	3955-11	52	Trigger Pin	280-265
† 26	Front Rotor Bearing	TA-22A	53	Throttle Valve Plunger	3955-302
27	Motor Housing Assembly	TD-3956Ti-40	54	Cap Screw (2 required)	2850-49
28	Warning Label for Impacttools	WARNING-2-99	55	Socket Retainer	RR100205
† 29	Air Port Gasket Retainer (2 required)	2940-200	*	Grease Gun	R000A2-228
† # 30	Air Port Gasket (2 required)	R44H-210A	*	Tune-up Kit (includes 7, 8, 9, 11, 14, 17, 18, 24, 26, 29[2], 30[2], 31, 32, 34, 35, 46, 47 and 48)	3955-TK1
*	ATEX Spec Label	ATEX-301A			
† 31	Reverse Lock Plunger	4U-663B			

* Indicates not illustrated.

† Indicates Tune-up Kit part.

‡ Indicates common-wear parts. Maintain stock to reduce downtime.

Parts and Maintenance

When tool life has expired, it is recommended that the tool be disassembled, degreased and parts separated by material for proper recycling.

Tool repair and maintenance should only be carried out by an Authorized Service Center.

Refer all communications to the nearest **Ingersoll Rand** office or distributor.

Related Documentation

Manuals can be downloaded from ingersollrand.com

For additional information, refer to:

Product Safety Information Manual 04580916 and 47559151001 (ATEX)

Product Information Manual TL-3956-PIM

Product Maintenance Manual TL-3956-MIM

Declaration of Conformity TL-3956-DOC

