



47103759

Edition 9

May 2023

Air Impact Wrench

2145QiMAX and 2155QiMAX Series

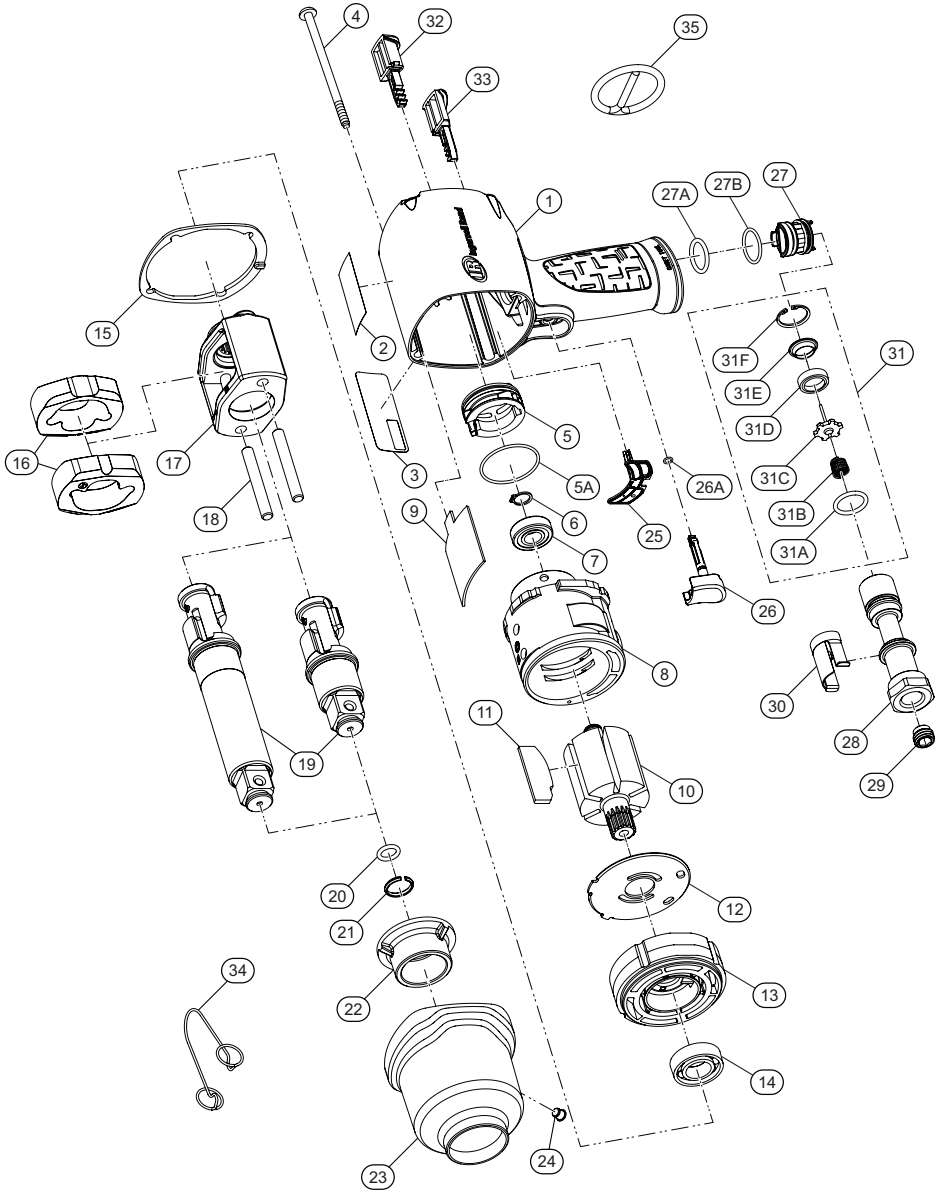
Parts Information



Save These Instructions

 **Ingersoll Rand**[®]

2145QiMAX and 2155QiMAX Series, Air Impact Wrench - Exploded View



(Dwg. 47106281)

2145QiMAX and 2155QiMAX Series, Air Impact Wrench - Parts List

Item	Part Description	Part Number	Item	Part Description	Part Number
	Housing Assembly			Hammer Case Assembly	
	for model 2145QiMAX	2145QiMAX-A40		for models 2145QiMAX, 2145QiMAX-A, 2145QiMAX-3, 2155QiMAX, and 2155QiMAX-A	2145-D727
	for model 2145QiMAX-A	2145QiMAX-A-A40		for model 2145QiMAX-6	2145-6-D727
	for model 2145QiMAX-3	2145QiMAX-3-A40			
	for model 2145QiMAX-6	2145QiMAX-6-A40	22	Bushing, Hammer Case	---
	for model 2155QiMAX	2155QiMAX-A40	23	Hammer Case	---
	for model 2155QiMAX-A	2155QiMAX-A-A40	24	Grease Fitting	130SR-188
1	Housing	---	† 25	Gasket, Motor	2141-283
2	Warning Label	---	†	Trigger Assembly	2145-D93BK
3	Information Label	---	26	Trigger	---
25	Gasket, Motor	---	26A	O-Ring, Trigger	---
	Reverse Valve Assembly	---		Reverse Valve Assembly	2141-A329
	Button Kit	---	27	Reverse Valve	---
2	Warning Label	WARNING-2-99	27A	O-Ring, Reverse Valve (Top-Black)	---
3	Information Label		27B	O-Ring, Reverse Valve (Bottom-Blue)	---
	for model 2145QiMAX	2145QiMAX-300		Inlet Bushing Assembly	2145-D565
	for model 2145QiMAX-A	2145QiMAX-A-300	28	Inlet Bushing	---
	for model 2145QiMAX-3	2145QiMAX-3-300	† 29	Inlet Pre-Screen	2145-61A
	for model 2145QiMAX-6	2145QiMAX-6-300	30	Inlet Clip	2141-57
	for model 2155QiMAX	2155QiMAX-300	31	Inlet Parts Kit	2141-K303
	for model 2155QiMAX-A	2155QiMAX-A-300	31A	O-Ring, Seal	---
4	Screw, Hammer Case (4 required)	2141-638	31B	Throttle Spring	---
	Power Regulator Assembly	2135-D249A	31C	Throttle Valve	---
5	Power Regulator	---	31D	Valve Seat	---
5A	O-Ring, Power Regulator	---	31E	Seat Support	---
6	Retaining Ring	2131-6	31F	Retainer	---
7	Ball Bearing (Cylinder)	2131-97		Button Kit	2145-K75RD
8	Cylinder	2141-3	32	Forward Button	---
9	Silencer	2145Q-311	33	Reverse Button	---
10	Rotor	2145-53		Tune-Up Kit	2145-TK2
† 11	Vane Pack (set of 7)	2145-42-7	5A	O-Ring, Power Regulator	---
12	Wear Plate	2145-11X	6	Retaining Ring	---
13	End Plate	2145-11	7	Ball Bearing (Cylinder)	---
14	Ball Bearing (End Plate)	R38P-606	11	Vane Pack (set of 7)	---
† 15	Hammer Case Gasket	2145-36RD	14	Ball Bearing (End Plate)	---
	Hammer Mechanism Kit	2145-THK2	15	Hammer Case Gasket	---
16	Hammer (2 required)	---	25	Gasket, Motor	---
17	Hammer Frame	---	26A	O-Ring, Trigger	---
18	Hammer Pin (2 required)	---	27A	O-Ring, Reverse Valve (Top-Black)	---
	Anvil Assembly		27B	O-Ring, Reverse Valve (Bottom-Blue)	---
	for models 2145QiMAX and 2145QiMAX-A	2145-A626	31	Inlet Parts Kit	---
	for model 2145QiMAX-3	2145-A626-3	34	Inlet Clip Removal Tool	2131-322
	for model 2145QiMAX-6	2145-A626-6	35	Socket Retention Ring (3/4" Anvil)	RR100345
	for models 2155QiMAX and 2155QiMAX-A	2155-A626		Socket Retention Ring (1" Anvil)	RR100155
19	Anvil	---	*	ATEX Label	ATEX-301A
	Socket Retainer Kit	---	† *	Air Care Kit (Grease Gun, Grease, and Oil)	115-LBK1
	Socket Retainer Kit		*	Grease (replacement tube for - LBK1)	115-4T
	for models 2145QiMAX, 2145QiMAX-A, 2145QiMAX-3, and 2145QiMAX-6 (3/4" Ring-type)	2145-K425	*	Air Tool Oil (4 oz. bottle)	10Z4
	for models 2155QiMAX and 2155QiMAX-A (1" Ring-type)	2155-K425	*	Grease (1 lb can)	105-1LB
20	O-Ring	---	*	Grease (8 lb can)	105-8LB
21	Socket Retainer	---	*	Grease Gun	R000A2-228
22	Bushing, Hammer Case				
	for models 2145QiMAX, 2145QiMAX-A, 2145QiMAX-3, 2155QiMAX, and 2155QiMAX-A	2145-641			
	for model 2145QiMAX-6	2145-6-641			

* Indicates not illustrated.

† Indicates common-wear parts. Maintain stock to reduce downtime.

Parts and Maintenance

When tool life has expired, it is recommended that the tool be disassembled, degreased and parts separated by material for proper recycling.

Tool repair and maintenance should only be carried out by an Authorized Service Center.

Refer all communications to the nearest **Ingersoll Rand** office or distributor.

Related Documentation

Manuals can be downloaded from **ingersollrand.com**

For additional information, refer to:

Product Safety Information Manual 04580916

Product Information Manual 47103767

Declaration of Conformity 47616440001

Notes:

Notes:

Notes:

[ingersollrand.com](https://www.ingersollrand.com)

© 2023 *Ingersoll Rand*

