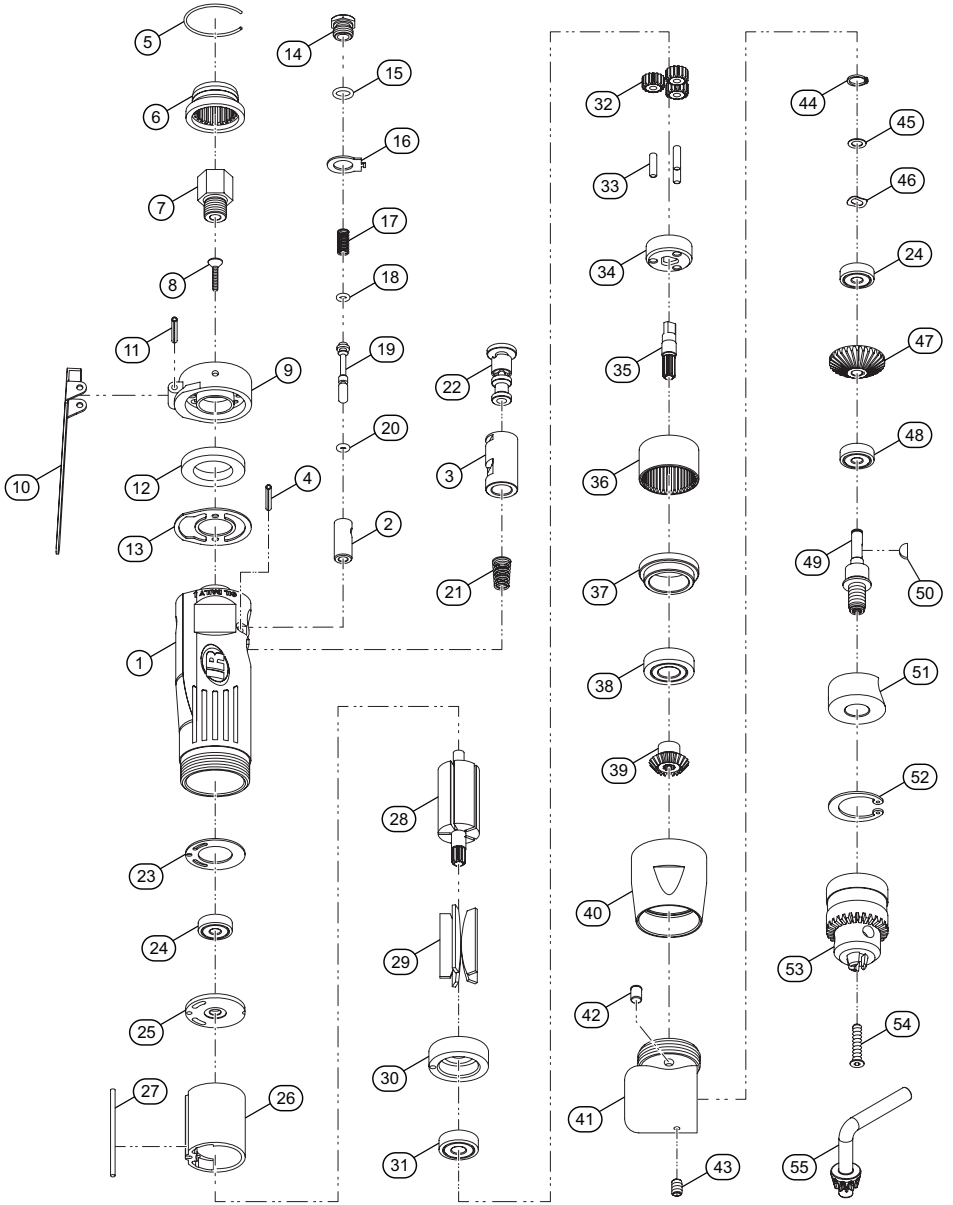


7807R-A, Air Angle Drill - Exploded View



(Dwg. TL-7807-PLM-1)

7807R-A, Air Angle Drill - Parts List

Item	Part Description	Part Number	Item	Part Description	Part Number
	Motor Housing Assembly	7807R-A-A40	28	Rotor	7807R-A-53
1	Motor Housing	---	29	Vane Pack (Set of 5)	7807R-A-42-5
2	Throttle Valve Bushing	7807R-A-93	30	Front End Plate	7807R-A-11
3	Reverse Valve Bushing	7807R-A-330	31	Front Rotor Bearing	7807R-A-34
4	Spring Pin	7807R-504	32	Planet Gear (3 required)	7807R-A-10
*	Name Plate Label	7807R-A-301	33	Gear Head Pin (3 required)	7807R-A-15
5	Deflector Stop Ring	7807R-A-28	34	Gear Head	7807R-A-216
6	Deflector	7807R-A-23	35	Spindle Shaft	7807R-A-41
7	Inlet Bushing	7807R-565	36	Ring Gear	7807R-A-36
8	Screw (2 required)	7807R-A-8	37	Bearing Cage	7807R-A-70
9	Housing Cap	7807R-A-7	38	Spindle Bearing	7807R-A-66
10	Throttle Lever	7807R-A-273	39	Pinion	7807R-A-551
11	Throttle Lever Pin	7807R-A-120	40	Gear Case	7807R-A-37
12	Muffler	7807R-A-311		Angle Housing Assembly	7807R-A-A550
13	Housing Gasket	7807R-A-739	41	Angle Housing	---
14	Valve Screw	7807R-A-60	42	Grease Fitting	7807R-A-879
15	Valve Screw O-Ring	7807R-A-379	43	Angle Housing Set Screw	7807R-A-54
16	Reverse Retainer	7807R-A-20	44	Bevel Pinion Gear Retainer	7807R-A-531
17	Throttle Valve Spring	7807R-A-51	45	Upper Bearing Washer	7807R-A-487
18	Throttle Valve O-Ring Top	7807R-A-16-1	46	Upper Bearing Wave Washer	7807R-A-57
19	Throttle Valve	7807R-A-302	47	Bevel Pinion Gear	7807R-A-552
20	Throttle Valve O-Ring Bottom	7807R-A-16-2	48	Spindle Lower Bearing	7807R-A-593
21	Reverse Valve Spring	7807R-A-515	49	Spindle	7807R-A-591
22	Reverse Valve	7807R-A-329	50	Bevel Pinion Gear Key	7807R-A-49
23	Motor Gasket	7807R-A-27	51	Lower Spindle Bearing Cage	7807R-A-65
24	Rear Rotor Bearing (2 required)	7807R-A-24	52	Spindle Retainer	7807R-A-853
25	Rear End Plate	7807R-A-12	53	Drill Chuck (3/8")	7807R-A-99
26	Cylinder	7807R-A-3	54	Chuck Screw	7807R-A-55
27	Cylinder Dowel	7807R-A-98	55	Chuck Key	7807R-A-253

* Indicates not illustrated.

Parts and Maintenance

When tool life has expired, it is recommended that the tool be disassembled, degreased and parts separated by material for proper recycling.

Tool repair and maintenance should only be carried out by an Authorized Service Center.

Refer all communications to the nearest **Ingersoll Rand** office or distributor.

Related Documentation

Manuals can be downloaded from ingersollrand.com

For additional information, refer to:

Product Safety Information Manual 04580353

Product Information Manual TL-7807-PIM